

## SOLID BEARING BLOCK

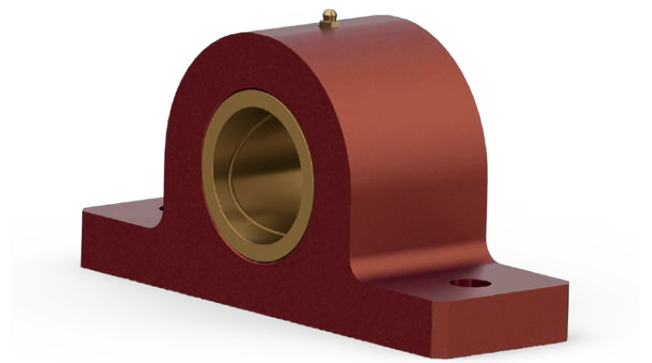
- > Custom designed housing to fit multiple applications.
- > Recommended bearings to use in this housing include:
  - Solid bronze
  - Sintered bronze

Bronze bearings are favourable as they offer high load capability and better corrosion resistance.

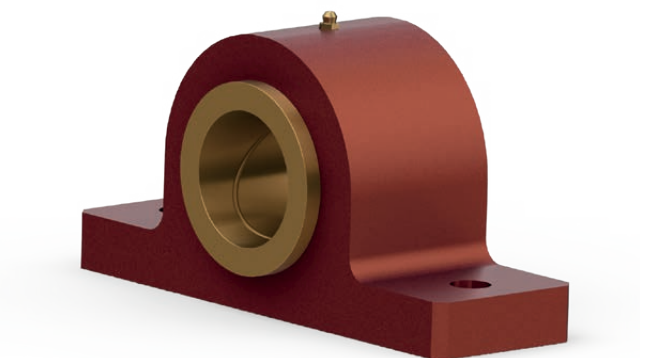
Bearings can be both plain or flange type. Alternative bearing materials can also be used.

- > Can be designed to fit off the shelf bearings.
- > Housing machined from solid steel.
- > Housing dimensions as follow:

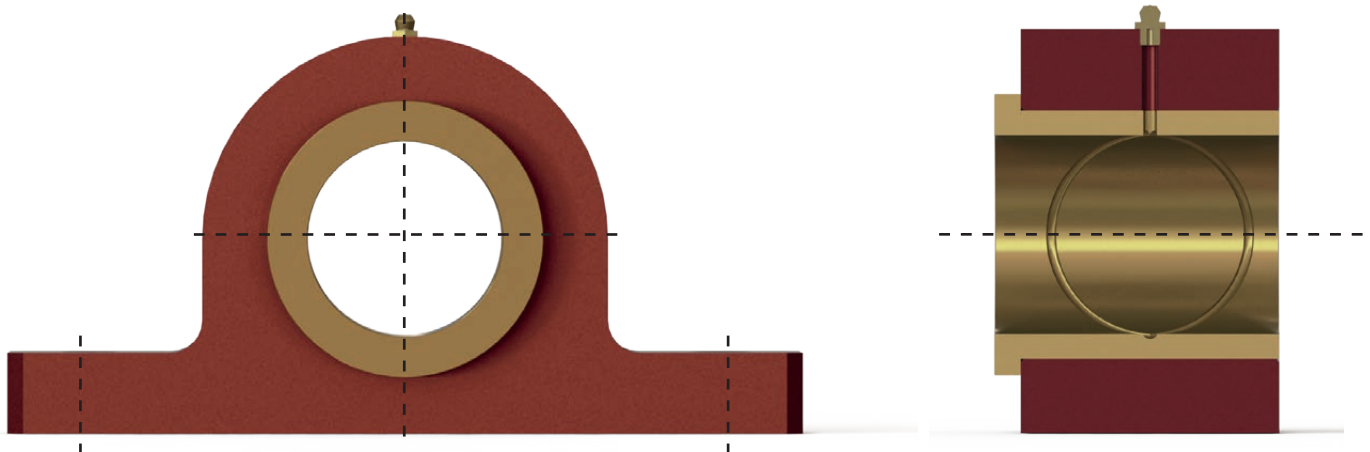
BORE SIZE	BASE LENGTH	BASE WIDTH	HOLE CENTRES	HOLE SIZE	CENTRE HEIGHT
20	100	35	70	9.5	22
25	130	50	100	13	25
30	155	50	115	13	30
40	170	55	130	13	25
50	190	65	145	22	45
60	235	85	180	20	55
70	200	90	195	20	65



PLAIN BEARING



FLANGED BEARING



FRONT VIEW AND CROSS SECTION OF BEARING BLOCK